



Static Bulletin Display

16' x 60' Static Display Facing West to Eastbound Traffic at mm 3.7 on the Atlantic City Expressway

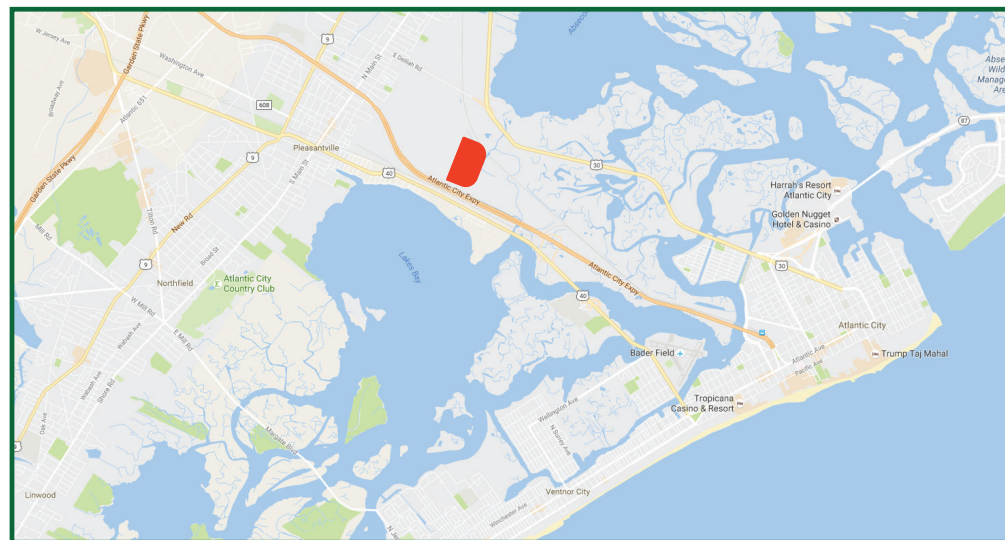
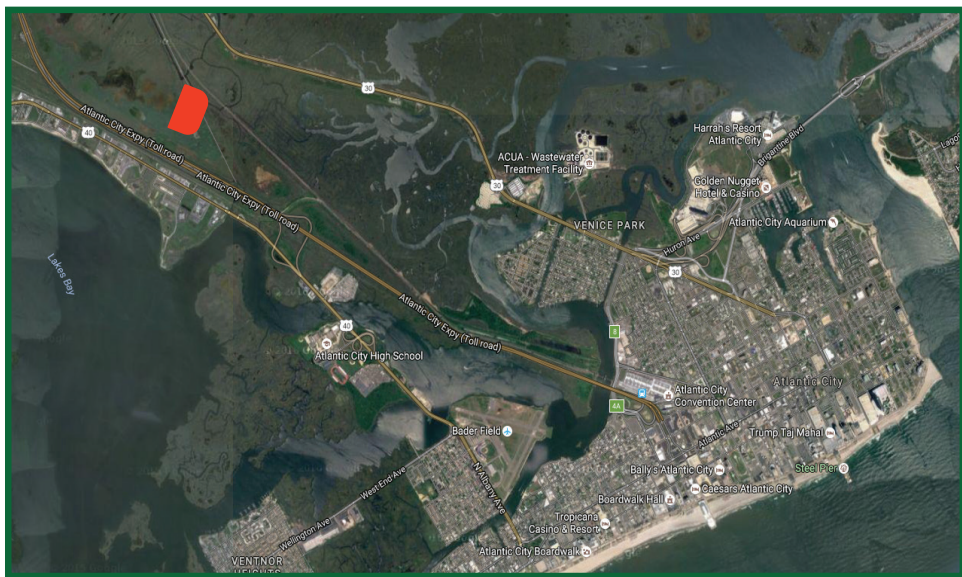
GSO105

www.gardenstateoutdoor.com

**GARDEN STATE
OUTDOOR**

This fantastic bulletin is ideal for capturing traffic heading east towards Atlantic City. East of the Garden State Parkway, between the Pleasantville Toll Plaza and exit 2 of the Atlantic City Expressway. Located in the expressway right of way motorists passing this unit have originated from the Greater Philadelphia area, the New York City metropolitan area, and all points in New Jersey. This unit reads to all of the traffic heading into the "heart" of Atlantic City where casinos, high-end retail shopping and a never ending nightlife await.





Board Location



Geopath Panel IDs : 30716245

DMA : Philadelphia

Geopath OOH Ratings : 284,960

Latitude : 39.3855188

Fully Illuminated

Longitude : -74.50271027

Call Now for Availability

Gabrielle Burkett
gburkett@gardenstateoutdoor.com
609-233-4213
609-340-0040

